



Image: UKI Arkkitehdit Oy and Lukkaroinen Arkkitehdit Oy

## COMPETITION PROGRAM

# Open art competition for the new building of the Oulu Central Police Station and Oulu Prison **15.1.–15.4.2025**

STATE  
ART  
COMMISSION

KANSALLISGALLERIA •  
FINLANDS NATIONALGALLERI •  
FINNISH NATIONAL GALLERY •

# 1 INVITATION

## 1.1 ORGANISER, NATURE AND PURPOSE OF THE COMPETITION

The State Art Committee, which is attached to the Finnish National Gallery, organises an open art competition in collaboration with the Senate Properties. The purpose of the competition is to find ideas for an artwork for the exterior wall of the new building of the Oulu Central Police Station and Oulu Prison (Käräjäsali), at Johdintie 15, Oulu.

Assessment of the entries will focus on artistic quality, viability of implementation, and development potential. After the competition has been decided, the State Art Commission will decide which proposal will become subject of further development and implementation.

## 1.2 ELIGIBILITY

The competition is a public and open international art competition for all citizens of the European Union, and for non-EU citizens living in Finland who are not subject to international sanctions. The selection board is obliged to exclude any candidate, tenderer or subcontractor from the competition if said party is affected by one of the mandatory exclusion criteria listed in Section 80 of the Act on Public Procurement and Concession Contracts.

## 1.3 PRIZES

The total prize sum is 15,000 euros, which is awarded as follows: 1st prize 7,000 euros; 2nd prize 4,000 euros; and 3rd prize 3,000 euros. Two recognition awards will also be awarded, 500 euros each.

The jury may also award honorary mentions.

The prizes are tax-free.

The total prize sum will be awarded only if

the number of entries submitted to the competition is the same or larger than the number of prizes. If there are fewer accepted entries than there are prizes, prizes will be awarded at the jury's discretion. Within the total sum of prizes, the jury is entitled to award prize sums that deviate from those in the competition brief, provided that the jury is unanimous in its decision.

## 1.4 COMPETITION JURY

The competition jury comprises the Finnish State Art Commission:

Riitta Ojanperä, Chair, Director of Collections Management, Finnish National Gallery  
 Jari Auer, Account Manager, Architect, Senate Properties  
 Pirjetta Brander, visual artist  
 Marja Helander, photographer, video artist, film director  
 Heli Hiltunen, visual artist, painter  
 Ari Pelkonen, graphic artist  
 Kirsti Saarikorpi, designer, design chief  
 Mika Savela, arts advisor, architect, Arts Promotion Centre Finland

The secretary of the jury is Eija Aarnio, executive producer and secretary of the State Art Commission. The secretary will not participate in the jury's decision making.

The jury will conduct its deliberations behind closed doors. The jury members, the secretary and the competition contact person may not enter the competition either personally or by proxy.

All private negotiations and exchanges of opinion between jury members and competitors on matters relating to the competition are prohibited.

The jury will hear as experts representatives from the Oulu Central Police Station, Oulu Prison, Oulu District Court, Senate Properties, and architects of the new building. The jury is entitled also to hear other experts it considers

necessary. The experts may participate in the deliberations, nor are they entitled to participate in the competition.

## 1.5 APPROVAL OF THE COMPETITION BRIEF

The competition brief has been approved by the State Art Commission and Senate Properties.

## 1.6 ACCESS TO COMPETITION DOCUMENTS

Competition documents can be downloaded online at [www.valtionaideteostoimikunta.fi/Oulupoliisi-taidekilpailu](http://www.valtionaideteostoimikunta.fi/Oulupoliisi-taidekilpailu)

## 1.7 COMPETITION PERIOD

The competition starts on Wednesday **15.1.2025** and ends on Tuesday **15.4.2025**.

# 2 COMPETITION BRIEF

## 2.1 OULU CENTRAL POLICE STATION AND OULU PRISON, JOHDINTIE 15, OULU

Begun in autumn 2022, construction of the central police station and courtrooms will be completed by the end of 2024, and the central police station will commence operations in phases in early 2025. Construction of the prison began in spring 2023 and will be completed in October 2025. The prison will start operating by early 2026 at the latest. The gross floor area of the project is 32,400 square metres, its total estimated cost is 130 million euros.

This is the first integrated facility with a police station and a prison to be constructed in Finland.

The project represents a completely new solution in Finland, with the prison, police facilities and courtrooms all constructed on the same site and connected internally. The integrated police–prison arrangement will yield significant operational, logistical and spatial benefits. The aim is to provide required premises that are healthy, safe and functional. In total, around 500 people will eventually work in the new premises.

The central police station will house the Police Department’s management and administration, as well as surveillance and emergency operations, criminal investigation, and a police detention facility. In addition, the new building will also accommodate the Oulu unit of the National Bureau of Investigation. Police licensing services will remain in Oulu’s city centre even after the new facility is completed. Oulu Prison will be a modern remand and detention facility for max. 100 inmates, including men and women, juveniles, minors and people requiring special support.

Shared facilities for the occupants, such as reception and screening rooms, security checkpoints, and meeting rooms, will be located in the area between the police station and the prison. There will also be a shared courtroom where the Oulu District Court and the Rovaniemi Court of Appeal will hear criminal cases involving the inmates.

## 2.2 DESCRIPTION OF COMPETITION SITE

The façades of the new building’s public part consist of two parts. The most openly public spaces are located in the low section at the front, clad in dark brown brick. The orientation of the bricks changes in the upper part of the façade. Behind the low part is a taller, three-storey section clad in light-coloured brick. The public façade is quite long, appr. 175m, and three storeys high. The windows in the otherwise closed façade are vertical and have steep drip sills. Those on the light-coloured façade are arranged into repeating

groups with small variations. The grouping of windows on the darker volume is slightly freer. The main entrance is located in a recessed timber-clad space within the darker building part. At the back of the space is a glass wall offering a view of the main lobby of the building.

The designated site for the artwork is in the tall (9.3 m) building volume to the right of the entrance. There are four tall, vertical recessed fields in the brickwork, each about 50mm deep, which must be taken into consideration when designing the artwork. The fields are about 600mm wide, and are separated by c. 1200mm wide areas of smooth brickwork between them. The height of the vertical fields varies from about five to six metres. The area at the top of the façade where bricks change orientation is about 900mm in height. The recessed vertical fields in the façade can be incorporated as part of the artwork or covered, if desired.

The brick wall has normal load-bearing capacity and can support a heavy work of art. Most of the wall is made with perforated brick size 130mm; the recessed fields are built with perforated brick size 85mm. The design of the artwork must take into account the fact that the piece must not start lower than about four metres above the ground. However, an exception can be made from this requirement if the artwork is made of material that does not permit climbing.

### 2.3 AIMS AND CONDITIONS

The aim of the competition is to find ideas for a site-specific and permanent public artwork or series of works to be realised on the exterior wall of the new building (Käräjäsali), thereby creating a distinctive identity for the building. The work may be composed of multiple parts and realised using a variety of methods. Entries must take the distinctive character of the site into consideration. The artwork must support or enhance the values and social role of the police, keeping order and preventing crime.

The work of art must be easy to maintain, and have reasonable lifecycle cost. Funds allocated to the implementation of the work cannot be reallocated towards its future maintenance.

The materials and technical solutions used in the artwork must be safe, and the work must not interfere with movement or activities in any way. The work must not obstruct fire and rescue services.

The artwork must not constitute an aid to climbing that would allow access to the roof of the building or provide views into its interior. The work must not impede the positioning of surveillance cameras, a matter that will be further examined in the later stages of design. The work must not produce intrusive light effects inside the building or disturb surveillance cameras through flickering or colour-changing light.

During the jury's deliberations, a statement will be provided by security experts to identify security-related issues and needs of improvement in the proposed artworks.

### 2.4 EVALUATION CRITERIA

Evaluation will focus on the artistic quality, viability of implementation, and development potential of the entries. Entries will be evaluated from the viewpoint of ecological impact and sustainability in materials and production.

A single artwork or set of works can be selected for implementation.

A maximum sum of 100,000 euros (VAT 0%) is reserved for the implementation of the work. This includes the artist's fee and the cost of materials and production. The total amount and its items are conditional upon the annual budgets of the State Art Commission. In addition, a sum corresponding to appr. 10% of the artwork's production cost is reserved for the planning and implementation of the artwork's foundation and lighting.

The artist must ensure that neither the work nor any of its parts infringe upon the copyright of any third party or any other right based on copyright law, nor any other intellectual property rights.

Previously published entries cannot be accepted. The entry must be a new artwork designed specifically for the competition site.

## 3. TECHNICAL DATA

### 3.1 COMPETITION BRIEF

The competition brief comprises this brief and its annexes:

- site plan with dimensions
- illustrations (aerial and façade)

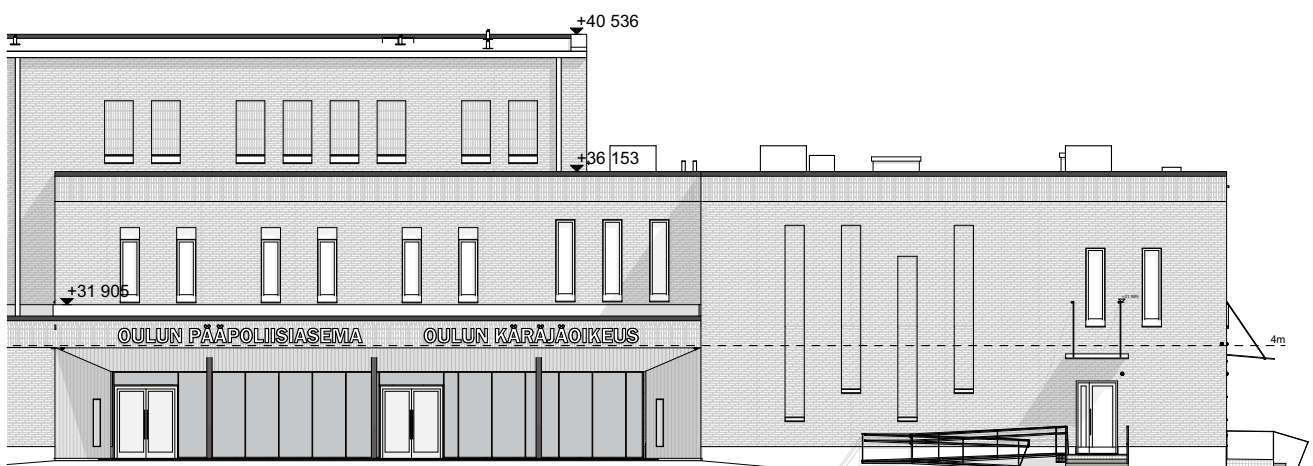
Drawings and visuals: UKI Arkkitehdit Oy and Lukkaroinen Arkkitehdit Oy

All competition documents can be downloaded from the competition website at [www.valtionaideteostoimikunta.fi/Oulupoliisi-taidekilpailu](http://www.valtionaideteostoimikunta.fi/Oulupoliisi-taidekilpailu)

### 3.2 ENQUIRIES

Participants may request further clarification and information concerning the competition. Enquiries should be addressed to the competition contact person, curator Heli Ahmio, no later than on Monday, 3.3.2025, by email to [taidekilpailu@kansallisgalleria.fi](mailto:taidekilpailu@kansallisgalleria.fi)

Enquiries and responses will be on view anonymously from Thursday, 14.3.2025, on the competition website at [www.valtionaideteostoimikunta.fi/Oulupoliisi-taidekilpailu](http://www.valtionaideteostoimikunta.fi/Oulupoliisi-taidekilpailu)



### 3.3 EVALUATION, ANNOUNCEMENT AND EXHIBITION OF RESULTS

The jury will endeavour to reach a decision so that the prize winners can be announced on Thursday, 19.5.2025, on the Finnish State Art Commission website.

A record will be prepared detailing the evaluation of competition entries, including individual assessments of the winning entries.

The winning entries and the evaluation report will be available from 29.5.2025 to 1.1.2026 on the competition website at [www.valtiontaideteostoitimikunta.fi/Oulupoliisi-taidekilpailu](http://www.valtiontaideteostoitimikunta.fi/Oulupoliisi-taidekilpailu). By entering the competition, participants signal their consent that the competition organisers may, without express permission or compensation, record the competition entries on a suitable medium and publish the documents in their communications, their own publications and on their own internet server, and make the works accessible to the public online.

### 3.4 FURTHER ACTION FOLLOWING THE COMPETITION

The State Art Commission will select 1–3 of the winning entries for further development. A separate contract will be concluded for the further development and eventual implementation of the work. A personal security clearance may be required of the creator of the work to be implemented.

The State Art Commission reserves the right not to implement any proposal if, after further development, the artistic, functional and financial objectives are not met, or if the security clearance reveals issues that prevent the artist from carrying out the work.

The aim is to implement the work during 2025–2026.

The State Art Commission will serve as producer for the implementation of the chosen artwork. The necessary permissions will be

obtained by the State Art Commission in collaboration with Senate Properties.

The implemented work and its documentation will be added to the State Art Commission's collection and archived. A deposition agreement regarding the work will be concluded with the State Artworks Commission, the user's representatives, and Senate Properties.

### 3.5 THE RIGHT TO USE COMPETITION ENTRIES

The State Art Commission and Senate Properties have the right to publish the winning entries and their authors in their communications and publications.

### 3.6 INSURANCE

The State Art Commission will not insure the competition entries nor will it accept any responsibility for possible damage to files during transfer.

### 3.7 COMPETITION RULES

This competition brief constitutes the rules of the competition.

If any changes or additions need to be made to the competition brief, the participants will be informed thereof no later than 30 days before the competition deadline via the competition website at [www.valtiontaideteostoitimikunta.fi/Oulupoliisi-taidekilpailu](http://www.valtiontaideteostoitimikunta.fi/Oulupoliisi-taidekilpailu). In such a case the competition period will be extended accordingly.

Submissions will be disqualified if they are received before or after the period specified in the competition invitation, or if they are in violation of this competition brief. If a submission is disqualified from the competition, the reason will be specified in the jury report.

### 3.8 LANGUAGE

The competition languages are Finnish, Swedish and English. If the language versions differ, the authoritative version will be the Finnish version.

### 3.9 SUBMISSION REQUIREMENTS

In order to be included in the competition, submissions must include the following materials:

1. Scheme for siting the proposed artwork
2. Composite images and/or perspective drawings from different directions (min. 2 images)
3. Written presentation of the idea, method, and production schedule for the artwork, as well as a background account of how the work relates to the competition site and how it corresponds to the aims of the competition
4. Itemised cost estimate
5. Other materials to illustrate the concept

The competition entry must be presented in max. four A3 pages in one PDF file that must include the siting scheme, composite/perspective images, written background account of the work, cost estimate, and other illustrative materials. The entry's title/author alias must be displayed prominently in the materials.

The participant's identity must not be deducible from the entry's title or otherwise be marked on the entry. The PDF file must be identified using the same title/alias. The maximum allowed size of the PDF file is 8 MB.

Participants may submit several entries to the competition, each entry sent separately and with a different title/alias.

### 3.10 CONFIDENTIALITY

The competition is confidential. Every document included in the entries must be furnished with the title/alias of the entry.

The submitted proposals will only be processed by the designated contact person. Once the competition is resolved, the contact person will disclose to the jury only the identities of the creators of the winning entries and honorary mentions.

Unawarded entries with their identifying data will be destroyed six months after the resolution of the competition.

### 3.11 SUBMISSION

The competition period will end on Tuesday, **15.4.2025**, at 23:59 hours Finnish time (UTC +2).

Entries must be submitted by delivering them (PDF file) between Tuesday 8.4.2025 and Tuesday 15.4.2025 using the WeTransfer service ([www.wetransfer.com](http://www.wetransfer.com)) to the address [taidekilpailu@kansallisgalleria.fi](mailto:taidekilpailu@kansallisgalleria.fi)

Only entries that have reached the correct address by the deadline will be accepted into the competition. In case of dispute, it is the sender's responsibility to show that the entry was submitted on time.

The following information must be included in the message field of the WeTransfer service: title/alias of the entry, name of author(s), contact information. The information must also include the names of copyright holders and assistants, unless the copyright belongs to the group collectively.

**Competition jury, Wednesday, 15.1.2025**