



OPEN ART COMPETITION FOR THE NEW OULU COURTHOUSE BUILDING

17.2.–5.5.2021

**STATE
ART
COMMISSION**

1 INVITATION

1.1 ORGANISER, NATURE AND PURPOSE OF THE COMPETITION

The Finnish State Art Commission organises an open art competition in collaboration with Senate Properties. The purpose of the competition is to find ideas for a work of art for the new annex to the Oulu Courthouse at Torikatu 34–40. The new building will house the Oulu District Court, the Administrative Court of Northern Finland, local facilities of the national Enforcement Authority and National Prosecutor Authority, as well as premises for main hearings of the Court of Appeal in Oulu. The complex will also house the offices of Legal Aid and Public Guardianship District and facilities of the Finnish Immigration Service.

Assessment of the entries will focus on artistic quality, viability of implementation, and development potential. Following the conclusion of the competition, the State Art Commission will decide which entry or entries will be accepted for further development and eventual implementation.

1.2 ELIGIBILITY

The competition is open to all.

1.3 PRIZES

The total prize sum is 15,000 euros, which is awarded as follows:

- 1st prize 7,000 euros
- 2nd prize 4,000 euros
- 3rd prize 3,000 euros

Two recognition awards will also be awarded, each 500 euros.

The jury may also award honorary mentions.

The prizes are tax-free.

The total prize sum will be awarded only if

the number of entries submitted to the competition is the same or larger than the number of prizes. If there are fewer accepted entries than there are prizes, awards will be awarded at the discretion of the jury. Within the total sum of prizes, the jury is entitled to award prize sums that deviate from those in the competition brief, provided that the jury is unanimous in its decision.

1.4 COMPETITION JURY

The competition jury comprises the Finnish State Art Commission:

Henri Terho, special advisor, chairperson, (jury chair)

Jari Auer, account manager, architect

Marja Helander, photographer,

video artist and film director

Liisa Kantanen, paper conservator

Paavo Paunu, visual artist

Ari Pelkonen, graphic artist

Kirsti Saarikorpi, head of design

Nora Tapper, sculptor, deputy chair

The secretary of the jury is Eija Aarnio, senior producer and secretary of the State Art Commission. The secretary will not participate in the decision making of the jury.

The jury will conduct its deliberations behind closed doors. The jury members, the secretary and the competition contact person may not participate in the competition either personally or by proxy. All private negotiations and exchanges of opinion between jury members and competitors on matters relating to the competition are prohibited.

As experts, the jury will hear representatives appointed by the future occupants of the building, representatives of Senate Properties, and the architect and interior architect of the new building. The jury is entitled also to hear other experts it considers necessary. Experts cannot participate in the deliberations, nor are they entitled to participate in the competition.



1.5 APPROVAL OF THE COMPETITION BRIEF

The competition brief has been approved by the State Art Commission and Senate Properties.

1.6 ACCESS TO COMPETITION DOCUMENTS

Competition documents can be downloaded online at www.valtionaideteostomikunta.fi/oulun_oikeustalo-taidekilpailu.

1.7 COMPETITION PERIOD

The competition will commence on **Wednesday, 17 February 2021**, and end on **Wednesday, 5 May 2021**.

2 DESIGN BRIEF

2.1 OULU COURTHOUSE

The new courthouse complex will unite most of the judicial administration in Oulu under one roof. The necessity for the new building arises from reforms that will increase the number of judicial administrative personnel in Oulu by approximately 50 person years. The current courthouse premises at Rata-aukio will no longer be available in the future.

The new building to be constructed at the site of the old courthouse along Torikatu street will include facilities for the Oulu District Court, the Administrative Court of Northern Finland, and local offices of the National Enforcement Authority and National Prosecutor Authority; it will also host the main hearings of the Rovaniemi Court of Appeal held in Oulu. The complex will also house the offices of the Legal Aid and Public Guardianship Districts Service (Migri). The new facilities will have nearly 400 users. In addition to courtrooms,

the building will include customer service facilities and offices. The design goal was to provide secure and healthy spatial solutions for judicial administration that comply with the administration's working environment and premises concept and in particular support new working methods and digitalisation.

The new premises are expected to be completed in early 2023. The contractor is Senate Properties, which carries centralised responsibility for public administration premises and workspace development. In keeping with the practices of the Ministry of Justice and of Senate Properties, the facilities are being designed in close cooperation with the future occupants of the premises. Architectural design of the building is being done by Komulainen Arkkitehdit Oy and PES-Architects.

2.2 DESCRIPTION OF COMPETITION SITE

The new Oulu Courthouse will be constructed in the centre of the City of Oulu at Torikatu 34 on block no. 7 in the grid-plan area of the city. A building completed in 2006 will remain on the plot and is to be used by the courthouse. A protected timber-frame daycare centre also stands on the same block. Between Torikatu and the courthouse lies a green zone that will include planters, trees, and benches. The main entrance of the courthouse is from Torikatu; the entrance for the customer service facilities of the offices of Legal Aid and Public Guardianship District are on Sepänkatu and the entrance of Migri at Albertinkatu.

Courtrooms are located on the 1st floor. Customer service facilities are on the 2nd floor, floors 2-4 consist of offices, and the 5th floor is the air conditioning machine room. Underground floors will house parking spaces and various auxiliary and technical facilities.

The new building has a concrete frame. The 1st floor will be clad in Kuru Grey Granite and floors 2-4 with pale-grey plastered brick, with window detailing in copper- and brass-coloured copper plate. The entrance recess will be clad in brick-red terracotta rods. The façades facing the courtyard will be made of pale-grey sheet metal and glass plank elements.

Sites for artworks

Courtrooms

The back walls of the courtrooms are made of micro-perforated oak veneer panels finished in a pale varnish. The lower parts of the side walls are oak-veneered board; the upper parts from 1.06 metres upwards to the ceiling are finished with oak slats with a black backing felt, and the same finish is used on the ceilings. The floors are covered with a dark-grey textile carpet. Most of the furniture is veneered in oak; the front of the judge's bench is black-stained oak veneer. The chairs and public benches are upholstered in dark materials.

The walls behind each judge's bench in the courtrooms is an intended site for art. The bench is 1.06m from the floor, and the ceiling height is 3.2m. The width of free wall space varies, from appr. 5m in the two small courtrooms to appr. 6m in the seven standard courtrooms, to 7.5-9.5m in the largest courtrooms. There are a total of 13 courtrooms where art is needed on the back wall. The competition seeks solutions for a serial concept that will repeat in some or all courtrooms.

Lobbies

There are three lobbies for courthouse visitors: one for criminal courts, another for civil courts, and a third for arbitration courts. The walls of the public lobbies are mostly finished in warm, white lime plaster with bronze-coloured mineral particles. The wall facing the entrance is clad with shiny white-glazed ceramic rods. Ceilings are finished with oak-toned slats. The floors are light-brown stone slabs by Ylämaan Graniitti. Courtroom doors have an oak veneer, and their signage is black metal with white text. Lobby furniture consists of solid oak benches and fixed sofas upholstered in black leather. The info desk is also finished with oak veneer. The back wall of each lobby has a plywood panel with oak veneer that will contain an image, such as a photo, embedded in it by milling. The contractor wishes for the images milled into the panels to be part of the art competition. The plywood

panel is appr. 5m wide in the criminal court lobby, appr. 4.5m in the civil court lobby, and appr. 3.5m in the arbitration court lobby. All the plywood panel walls have a height of 3.2m.

All lobbies have roof lanterns that furnish the spaces with natural light. The lantern in the criminal court lobby abuts the side wall. The wall below the skylight is appr. 9m wide and up to 4.9m tall, and can be used to host a work of art. No heavy loads should be hung from the lanterns. The roof lanterns are embedded in a steel lattice with a long free span and cannot withstand further load. The long wall facing the criminal courtrooms can house a display case of appr. 30cm in depth; alternatively, a work of art can be embedded into the wall to a depth of 30cm.

The civil court lobby has a 7.4m-wide space for art; the arbitration court lobby has a space of appr. 2.2m for art. Both walls are 3.2m in height. The purpose of the competition is to find proposals for artworks that will enhance the spatial experience and general feel of the lobbies. The proposals can cover either a single lobby or all three.

2.3 AIMS AND CONDITIONS

The competition aims to find ideas for artworks to be sited in the courtrooms and lobbies of the new building. The works can be site-specific and permanent. They are expected to contribute to the distinctive character of the space and to enhance the unity of the courthouse spaces. Entries must take into consideration the distinctive character of the competition site and also show consideration for the users of the space.

The jury may select one or more works to be implemented. Also a serial concept to be installed in several spaces is acceptable. Entries may also consist of works in several different spaces that are linked thematically, regardless of the medium. If a participant proposes works for several spaces in a single entry, the entry must also include a mention of whether any of the individual works can be implemented as freestanding works, or if the

works together constitute an entity from which no one part can be detached for further development.

The proposed artworks must be easy to service and maintain, and have a modest lifetime cost. Funds allocated to the production of the work cannot be reallocated for its future maintenance.

Entries will be evaluated also from the viewpoint of ecology and sustainability of materials and production.

The materials and technical solutions employed in the work must be safe for both people and property, and the works must not impede or obstruct the movement or activities of people in the spaces in any way. The works must not obstruct fire and rescue services.



2.4 EVALUATION CRITERIA

A maximum sum of 100,000 euros (VAT 0%) is reserved for the implementation of the artworks. This sum includes artist fees, the cost of materials and production, and installation costs.

The artist must ensure that neither the work nor any of its parts infringe upon the copyright of any third party or any other right based on copyright law, nor any other intellectual property rights.

Previously published entries cannot be accepted. The entry must be a new artwork designed specifically for the competition site.

Evaluation will focus on the artistic quality, viability of implementation, and development potential of the entries.



3. TECHNICAL DATA

3.1 COMPETITION BRIEF

The competition brief comprises this brief and its annexes.

- layouts with dimensions
- illustrations of both exterior and interior

<https://drive.google.com/drive/folders/1W-JNTWT3TDWbZ1b33YqSfjGBErKs4pT6R?usp=sharing>

Drawings and visuals: Komulainen Arkkitehdit Oy and PES-Architects

All competition documents can be downloaded from the competition website at www.valtionaideteostoimikunta.fi/oulun_oikeustalo-taidekilpailu.

3.2 ENQUIRIES

Participants may request further clarification and information concerning the competition. Enquiries and requests should be addressed to the competition contact person Heli Ahmio no later than on Wednesday, 24 March 2021, by email to taidekilpailu@kansallisgalleria.fi.

The enquiries and responses will be on view anonymously from Wednesday, 31 March 2021, on the competition website at www.valtionaideteostoimikunta.fi/oulun_oikeustalo-taidekilpailu.

3.3 EVALUATION, ANNOUNCEMENT AND EXHIBITION OF RESULTS

The jury will seek to make its selection so that the prize winners and honorary mentions can be published on Thursday, 3 June 2021, at the website of the Finnish State Art Commission.

A jury report will be drawn up that will contain individual evaluations of the winning entries and the honorary mentions.

The winning entries and honorary mentions as well as the jury report will be on view online from Thursday 3 June 2021 to 2 December 2021 at the competition website www.valtionaideteostoimikunta.fi/oulun_oikeustalo-taidekilpailu. By submitting their entries, participants signal their acceptance that the organisers may, without express permission or compensation, document the winning entries and honorary mentions using an appropriate medium, and may publish the documents in their communications, publications and on proprietary web server, and make the works accessible to the public via open Internet.

3.4 FURTHER ACTION FOLLOWING THE COMPETITION

The jury will select for further development 1–3 artistically, technically and financially most suitable entries from among the winners. A separate agreement regarding further development and implementation of the entries will be made with the participants after the competition.

If possible, the works will be produced and installed during 2022.

The Finnish State Art Commission reserves the right not to implement any of the entries if the artistic, technical and financial goals are not attained after further development.

The State Art Commission will act as the producer for the implementation of the selected works. The necessary permissions will be obtained by the State Art Commission in collaboration with Senate Properties.

The implemented artworks and their documentation will be added to the State Art Commission collection and archived. A deposition agreement will be made with the State Art Commission and Senate Properties.

3.5 THE RIGHT TO USE COMPETITION ENTRIES

The State Art Commission and Senate Properties have the right to publish the winning entries and honorary mentions and their authors in their communications and publications.

3.6 INSURANCE

The State Art Commission will not insure the competition entries nor will it accept any responsibility for possible damage to files during transfer.

3.7 COMPETITION RULES

This competition brief constitutes the rules of the competition.

If any changes or additions need to be

made to the competition brief, the participants will be informed of them no later than 30 days prior to the end of the competition period via the competition website www.valtiontaidetoistoimikunta.fi/oulun_oikeustalo-taidekilpailu. In such a case the competition period will be extended.

Submissions will be disqualified if they are received before or after the period specified in the competition invitation, or if they are in violation of this competition brief. If a submission is disqualified from the competition, the reason will be specified in the jury report.

3.8 LANGUAGE

The competition languages are Finnish, Swedish and English. If the language versions differ, the authoritative version will be the Finnish version.

3.9 SUBMISSION REQUIREMENTS

In order to be included in the competition, submissions must include the following materials:

- Scheme for siting the proposed artwork
- Composite images and/or perspective drawings from different directions (min. 2 images)
 - Written presentation of the idea, method, and production schedule for the artwork, as well as a background account of how the work relates to the competition site and how it corresponds to the aims of the competition
 - Itemised cost estimate
 - Other materials to illustrate the concept

The competition entry must be presented in max. four A3 pages in one PDF file that must include the siting scheme, composite/perspective images, written background account of the work, cost estimate, and other illustrative materials, such as site plan. The entry's title/author alias must be displayed prominently in the materials.

The participant's identity must not be

deducible from the entry's title or otherwise be marked on the entry. The PDF file must be identified using the same title. The maximum allowed size of the PDF file is 8 MB.

All texts included in the entries must be legible on A3-size printouts.

Participants may submit several entries to the competition, each entry sent separately and with a different title.

3.10 CONFIDENTIALITY

The competition is confidential. Every document included in the entries must be furnished with the title of the entry.

The submitted entries will be processed only by the competition contact person, and the identity of the participants will not be disclosed prior to the resolution of the competition. Once the competition is resolved, the contact person will disclose to the jury only the identities of the winning entries and honor-ary mentions.

Unawarded entries with their identifying data will be destroyed six months after the resolution of the competition.

3.11 SUBMISSION

The competition period will end on **Wednesday, 5 May 2021, at 23:59** hours Finnish time (UTC +2).

Entries must be submitted by delivering them (PDF file) between Wednesday 28 April - Wednesday 5 May 2021 using the WeTransfer service (www.wetransfer.com) to taidekilpailu@kansallisgalleria.fi.

Only entries submitted within the specified submission period to the correct address will be considered in the competition. In case of dispute, it is the sender's responsibility to show that the entry was submitted on time.

The following information must be included in the message field of the WeTransfer service: title of the entry, name of author(s), contact information. The information must also include the names of copyright holders and assistants, unless the copyright belongs to the group collectively.

Competition jury, 17 February 2021

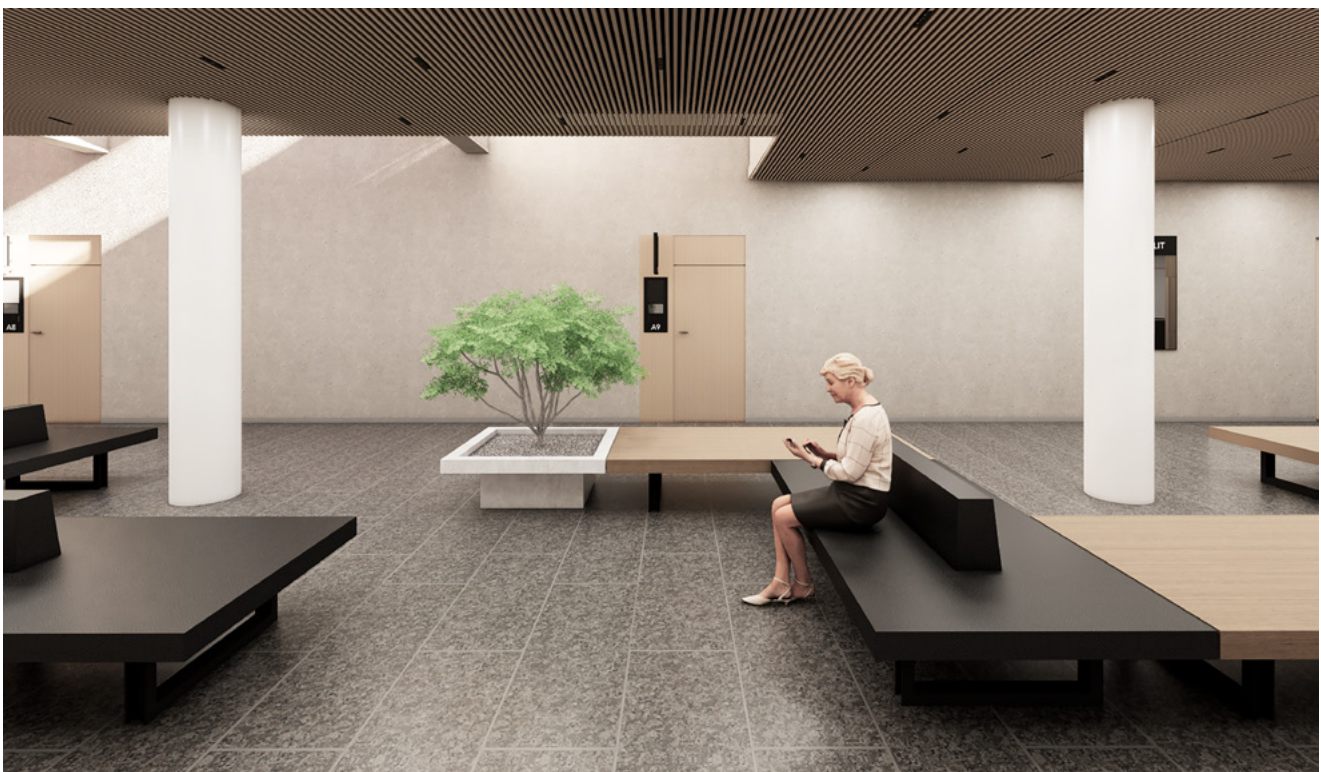


Photo: Komulainen Arkkitehdit Oy, PES-Arkkitehdit